

Parkheath

Sold on Service

Leighton Crescent NW5

£1,647 PCM (£380 per week) - Camden Band D



Bright and spacious 1 bedroom apartment

High ceilings and large windows

Terrace overlooking garden square

Bright reception with original cornicing

1st floor of period conversion

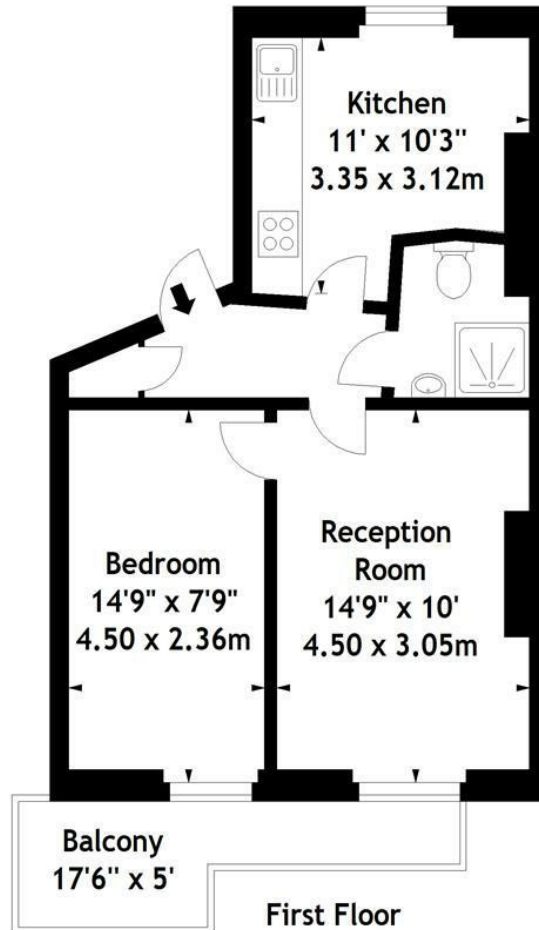
Wooden flooring throughout

Large kitchen diner

5 minutes to tube and Thameslink

Kentish Town Office 020 7485 0400

Leighton Crescent, NW5
Approx. Gross Internal Area
450 Sq Ft - 41.81 Sq M



Measured in accordance with RICS guidelines. Every attempt is made to ensure accuracy, however all measurements are approximate. This floor plan is for illustrative purposes only and is not to scale.
© Datagraphy Ltd 2017
Photographs * Floorplans * Virtual Tours
Tel: 0845 643 4401 www.datagraphy.com

The particulars do not constitute part of an offer or contract. The particulars, including text, photographs and plans, are for the guidance only of prospective purchasers/tenants and must not be relied upon as statements of fact. The descriptions provided therein represent the opinion of the author and whilst given in good faith should not be construed as statements of fact. Nothing in these particulars shall be deemed a statement that the property is in good condition or otherwise or that any services or facilities are in good working order. All measurements are approximate